

NOTE: EXACTLY CUT AROUND EACH PATTERN AS INDICATED IN THE INSTRUCTIONS. CUT AROUND THE OUTSIDE EDGE OF THE MARK SO THE MARK ITSELF REMAINS ON THE PATTERN.

# FUSELAGE TUBE MARKING GUIDE

GUIDE LINE FOR RIGHT CONTROL TAB

GUIDE LINE FOR WINGS

1

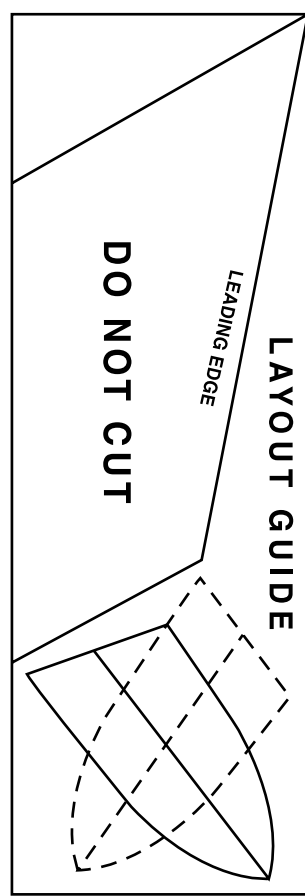
GUIDE LINE FOR LEFT CONTROL TAB

GUIDE LINE FOR LAUNCHING LUG

SAVE THIS BODY TUBE MARKING GUIDE FOR MARKING FIN GUIDE LINES ON ALL 4 FIN ROCKETS MADE FROM BODY TUBE # BT-30

ELEVON RECESS

FRONT LANDING SKID  
1 REQUIRED



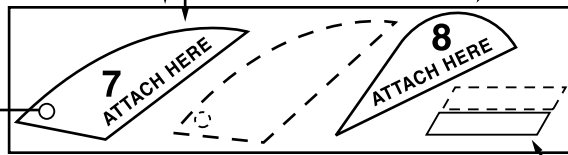
3/32" x 3/4" x 3"

REINFORCED Balsa STRIP

CONTROL TAB

2 REQUIRED

PUNCH HOLE FOR ADJUSTING SCREW USING A BALL POINT PEN OR SHARP PENCIL. TAP THREADS BY TURNING SCREW THROUGH PUNCHED HOLE. THEN CUT OUT AS INDICATED.



ELEVON LOCK TAB  
2 REQUIRED

LEADING EDGE

POSITION FOR TAPE DISC

2

## WING PATTERN

CUT FROM 1/16" Balsa SHEET

POSITION FOR FORWARD EDGE OF HINGE

ELEVON ATTACHES ALONG THIS EDGE

10

SPIN TAB  
2 REQUIRED

CUT FROM 1/16" Balsa SCRAP

RIGHT TOP INSIDE

3

RIGHT STABILIZER  
1 REQUIRED

ATTACH TO WING TIP

WOOD GRAIN

LEFT TOP INSIDE

4

LEFT STABILIZER  
1 REQUIRED

ATTACH TO WING TIP

WOOD GRAIN

5

ELEVON—2 REQUIRED  
CUT FROM 1/16" x 1/2" x 6" STRIP

PUNCH HOLE WITH  
BALL POINT PEN  
OR PENCIL.

FORWARD END

6

ELEVON STOPS 2 REQUIRED

CUT FROM 1/16" x 1/2" x 6" STRIP

TRANSFER WING ATTACHING AND SPIN TAB GUIDE LINES TO Balsa PART. THE DOTTED LINES FOR THE SPIN TAB ARE TO BE TRANSFERRED TO THE OPPOSITE SIDE FROM THE WING ATTACHING LINES.